

ADR-JR/RT Portable Road Tube

This counter is a portable, self contained, battery operated vehicle counter consisting of a solid state air switch with a 16 x 2 character display and is powered by one six volt battery. The ADR-JR/RT is self contained in a weatherproof housing with a tamper proof latch and hinges. Units come completely assembled and ready for immediate use requiring the user to only connect a road-tube to the air switch.

Part Number 2364-1



Road Tube Counters

ADR1000 Plus (Portable Traffic Counter Classifier)

This ADR-1000 Plus provides ease of use and optimal functionality as a portable counter/classifier. Optional internal sensor modules allow the ADR-1000 Plus to monitor inputs using loops, piezos or contact closures. A removable PCMCIA memory card is also available to further extend storage capability.

With programmed quick setup features, field personnel need only press one or two keys to select recording operation. The type, configuration and format of data to be collected can be custom programmed or selected from menu driven choices.

Part Number 90-7 2 Roadtube

Part Number 90-5 4 Roadtube



NOTE: Lock is shipped with the counter and can also be bought separately. (See next page)



Traffic Counters

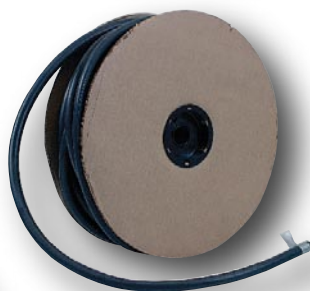
TAPCO TAPCO TAPCO TAPCO TAPCO TAPCO TAPCO TAPCO TAPCO TAPCO TAPCO



Road Tube & Accessories

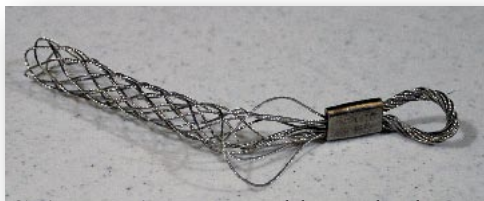
Road Tube - This 1/4" I.D. tubing is used for temporary traffic counting. Reusable neoprene rubber assures long life. Sold in 100 foot spools.

Part Number 373-1501



Security Chain - This 10 foot length of chain is used to secure traffic counter to prevent theft.

Part Number 373-1513



Chinese Fingers - Holds road tube securely to pavement and is easily reusable.

Part Number 373-1507

Clamp - Galvanized clamp securely holds road tube to roadway.

Part Number 373-1506



ADI Security Lock - Lock is shipped with the counter and can also be bought separately.

Part Number 373-1515

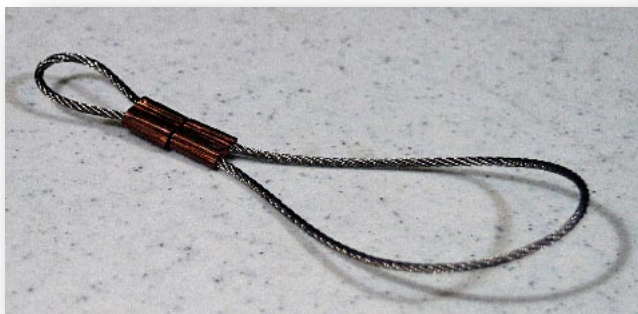
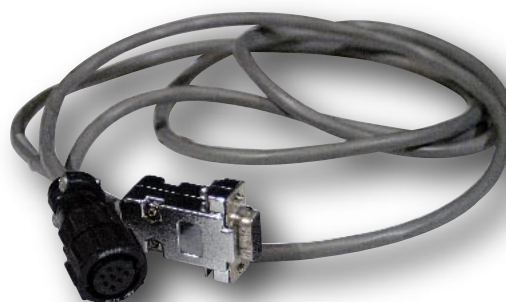


Figure Eight Clamp - This clamp provides flexible mounting of road tube to roadway. Adapts easily to longer road tube and is easily reusable.

Part Number 373-1508



Computer Cable - For use with ADR 1000 traffic counters. Easily connects your PC to traffic counter to upload data. The software is sold separately.

Part Number 90-25

PK Nails - These nails are used to securely hold any of the road tube clamps to the roadway. They are available in lengths of 1 1/2 and 2 1/2 inches and are sold in boxes of 100.

Part Number - 1 1/2" - 373-1511

Part Number - 2 1/2" - 373-1512



110 Volt Charger - This charger is used with the ADR 1000 traffic counter.

Part Number 90-24



Hi-Star[®] Portable Traffic Analyzer

Hi-Star[®] Portable Traffic Analyzer

The HI-STAR[®] portable traffic analyzer features patented Vehicle Magnetic Imaging (VMI) technology to provide you with the essential information needed for intelligent, accurate traffic analysis and highway management. HI-STAR records the volume, speed and length classification of vehicles PLUS road surface temperature, wet/dry surface condition and roadway occupancy.

Part Number 287-NC100 (Count Only)

Part Number 287-NC200 (Classifier)



Features

- Accurate vehicle counts
- No tubes, locks or chains
- Easy installation & low maintenance

INTERFACE MODULE

This module is used with the Hi Star road counter and connects your computer to the counter to accumulate and upload data. Software sold separately.

Part Number 287-IP10A



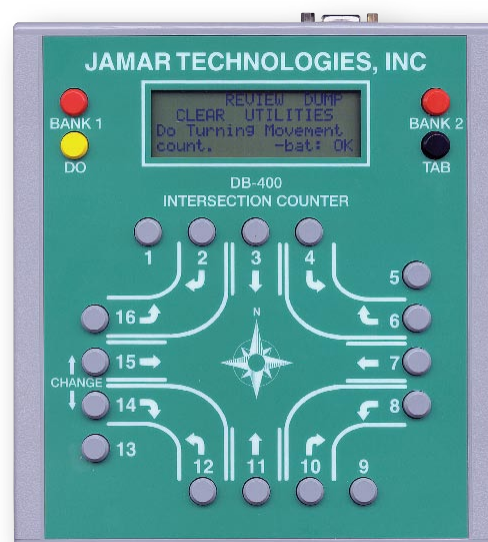
Manual Traffic Data Collection

DB-400 Turning Movement Counter

The DB-400 is an electronic hand-held device that enables you to do the most common of all manual traffic data studies: intersection turning movement counters.

The DB-400 is designed to make collecting turning movement data easy and accurate. There are 16 buttons, with 12 normally used for the left, through, and right movements from each of the four approach directions. The additional four buttons are user-defined: they can be used for bicycles, pedestrians, or whatever you want.

Multiple studies can be stored in the DB-400, using up to a total of 3112 intervals of data. For each count, the unit stores the data and time, the number of intervals used, a site code and the data. **Part Number 1191-2**



Features

- Records turning movement data for up to 3 classes of vehicles
- Downloads to PETRAPro Software
- Accurate, reliable and easy to use
- 128K Memory

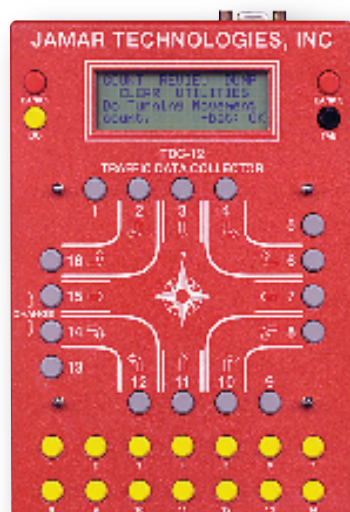
SPECIFICATIONS

Size: 7.5" x 7" x 1.5" (DB-400), 9" x 7" x 1.5" (TDC-12)

Weight: Approximately 2 pounds

Power: 4 AA alkaline batteries or external power supply

Output: ASCII file read by PETRA Pro software or other communications software



TDC-12 Turning Movement by Classification

Vehicles can be classified based on the Federal Highway Administration's standards, or by a user defined scheme of up to 14 classes. This is accomplished by the addition of 14 class buttons at the bottom of the unit.

Part Number 1191-11

Features

- Records turning data for up to 314 classes of vehicles
- Records stop sign delay data
- Records signalized delay data
- Records spot speed data
- Records multi-direction gap data
- Records saturation flow rate data
- Records time-stamped raw data
- Comes with study overlays

